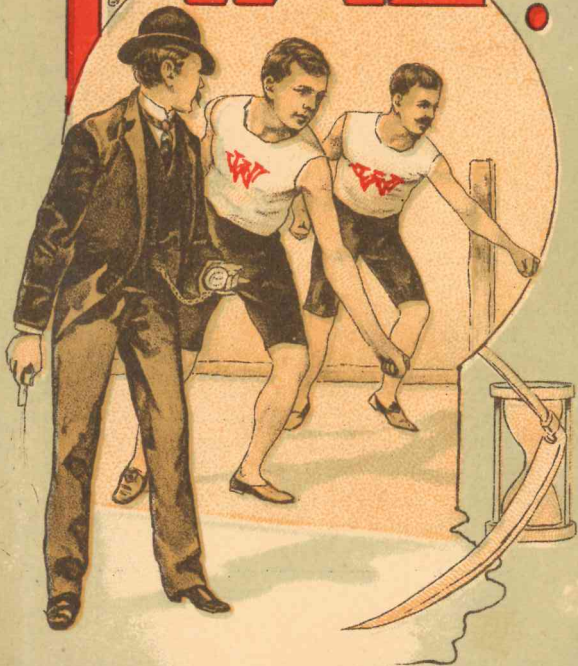


# TIME!

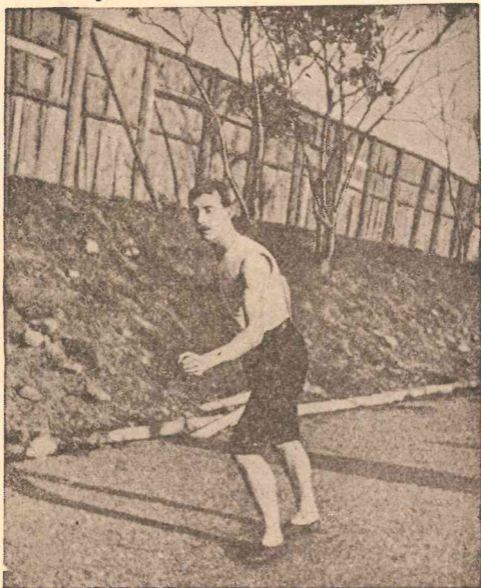


## TIME!

"Time!" The watchword of athletics. It resounds from every onlooker's throat when the race is over. "Time! What's the time?" Carry the WATERBURY. It is the athlete's watch. It is strong as the strongest of you; as "fit" as the best trained; it runs better than the swiftest, and has a more inexhaustible *wind* than the most enduring. You can run with it, jump with it, fall on it, and not hurt it. Should the starter fire his pistol through it, no great harm will be done. The company will make it as good as new for half a dollar. You can leave it in your locker, without worrying about sneak thieves. Good as it is, it only costs three dollars and a half to replace it. Above all, the WATERBURY has a record of its own. You strain every nerve to get the best time. Buy a WATERBURY, and you have it.

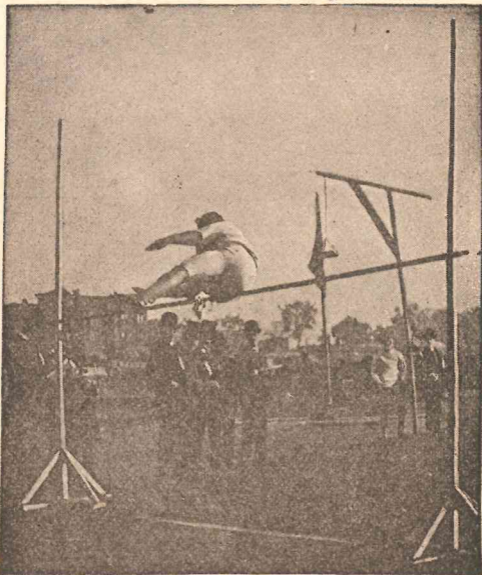
SELLING DEPOT, 52 Maiden Lane, New York City. GEORGE MERRITT, General Selling Agent.

*E. C. CARTER,  
Of the New York Athletic Club.*



He beat the record by running 10 miles in 52 m. 58 s. 3 s. The WATERBURY too has beaten the record as the cheapest reliable watch and is running ahead of all others in numbers, 1,200 a day being now manufactured.

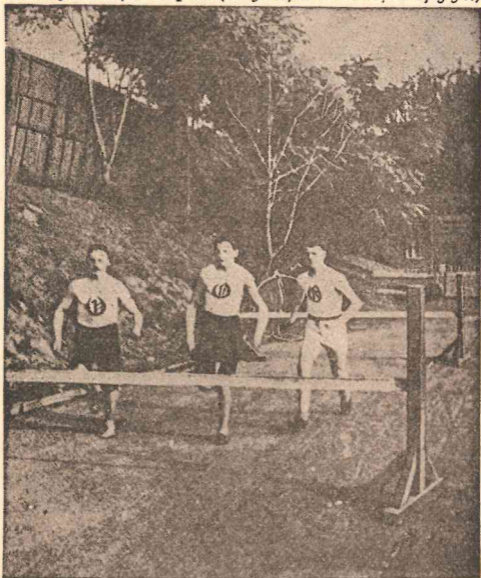
*GUY RICHARDS.  
Of Columbia College.*



He made a running high jump of 5 ft. 11 $\frac{1}{8}$  in. in June, 1886. The running high jump into popular favor which the WATERBURY made some years ago also created for it a record at once surprising and unique.

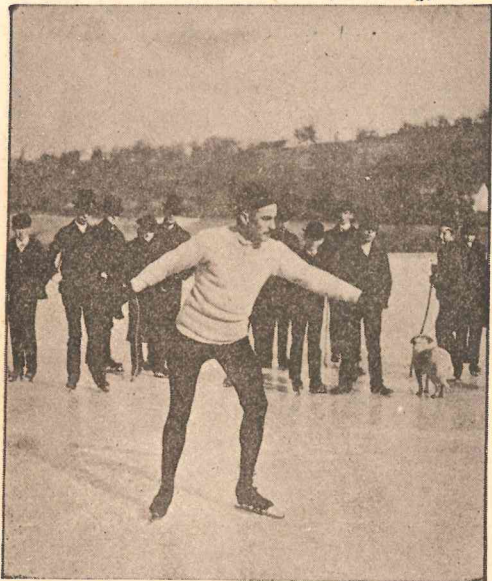
## A HURDLE RACE.

*A. A. Jordan, Champion (120 yds., 10 hurdles, in 17 3-5 s.)*



The career of the WATERBURY is a hurdle race, the successive jumps being made over the boundaries of America, England, Scotland, Ireland, Wales, Holland, Belgium, France, India and Australia.

*S. D. SEE,  
Amateur Skater (in the Act of Starting).*



50 yds. in 6 sec.; 100 y. in 10 1-5 s.; 150 y. in 14 1-5 s.; 200 y. in 18 s.; 220 y. in 19 3/4 s.; standing start. Rapid gliding as this is it cannot eclipse the rapidity with which the WATERBURY has glided into the affections of Young America.

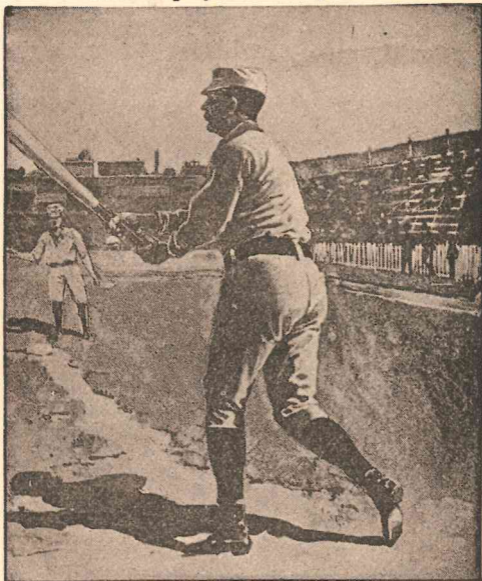
WILLIAM A. ROWE,  
*Champion Bicyclist.*

From a Photograph made expressly by the Pope M'f'g Co.



World's record,  $\frac{1}{4}$  mile to 22 miles, has made greatest distance in one hour, 22 miles 150 yards; rides a 55-inch Columbia Racer. Following the example of the WATERBURY he makes the best time in the world.

**THOMAS ESTERBROOK.**  
*Short Stop of the Metropolitans.*



In 1884 he played in 113 games, made 185 base hits, and his average in batting was 408. He is a good runner, but not so good as the WATERBURY, which will run 28 hours with one winding.

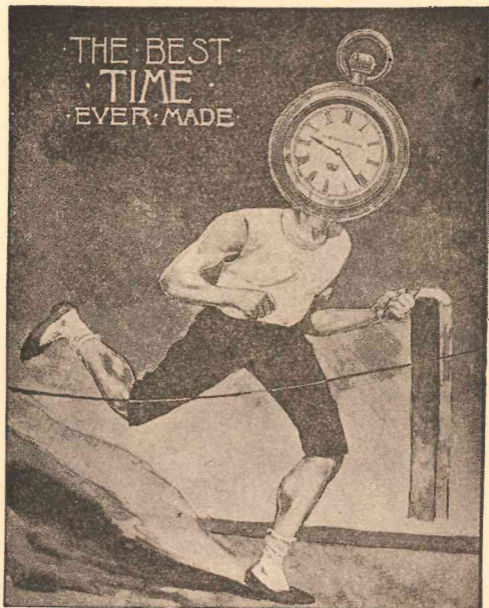


*RICHARD DUDLEY SEARS,  
Champion Lawn Tennis Player.*



Mr. Sears stands among Lawn Tennis players as the WATERBURY among watches—facile princeps. He won every match he played during the season of 1886, and his position, like the WATERBURY'S, is impregnable

*THE WATERBURY A HEAD.*



Yes, Sir! No better head can be found. Wear it! Heed it! And you will be ahead yourself, always on time—at school—at business—everywhere.

### *What the WATERBURY Is Not.*

It is *not* a toy. Nor is it a split-second stop movement, 18 carat gold chronometer with your name engraved on it and a gold chain thrown in.

### *What the WATERBURY Is.*

A strong, accurate, durable, reliable, and handsome stem-winding watch, selling for three dollars and a half.

### *Why the WATERBURY Is Cheap.*

Not because it is poorly made, but because it is unique and simple in its construction. The factory at Waterbury, Conn., contains one of the largest and finest plants of special machinery in the country.

### *The WATERBURY an American Watch.*

The Waterbury is the only real American invention in the way of a watch, all others made in this country being modeled after foreign calculations.

### *How the WATERBURY can be Repaired.*

By mailing it in the box in which it was bought, with your name and P. O. address on a slip of paper *in the box*. Do not fail to notify the company that you have sent on the watch, and enclosed in the letter, *not* the box, 65 cents for repairs, return postage and registry fee. Send all watches for repairs to Waterbury, Conn.

· THE · BEST · TIME · IN ·

THE: **WORLD**

THE:

THE

**WATERBURY.**

