

KIDS

PHOTOS

SUBSCRIBE

CONTACT

ADVERTISE

Mahomet Daily



letter

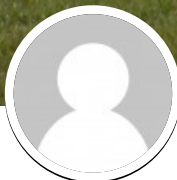
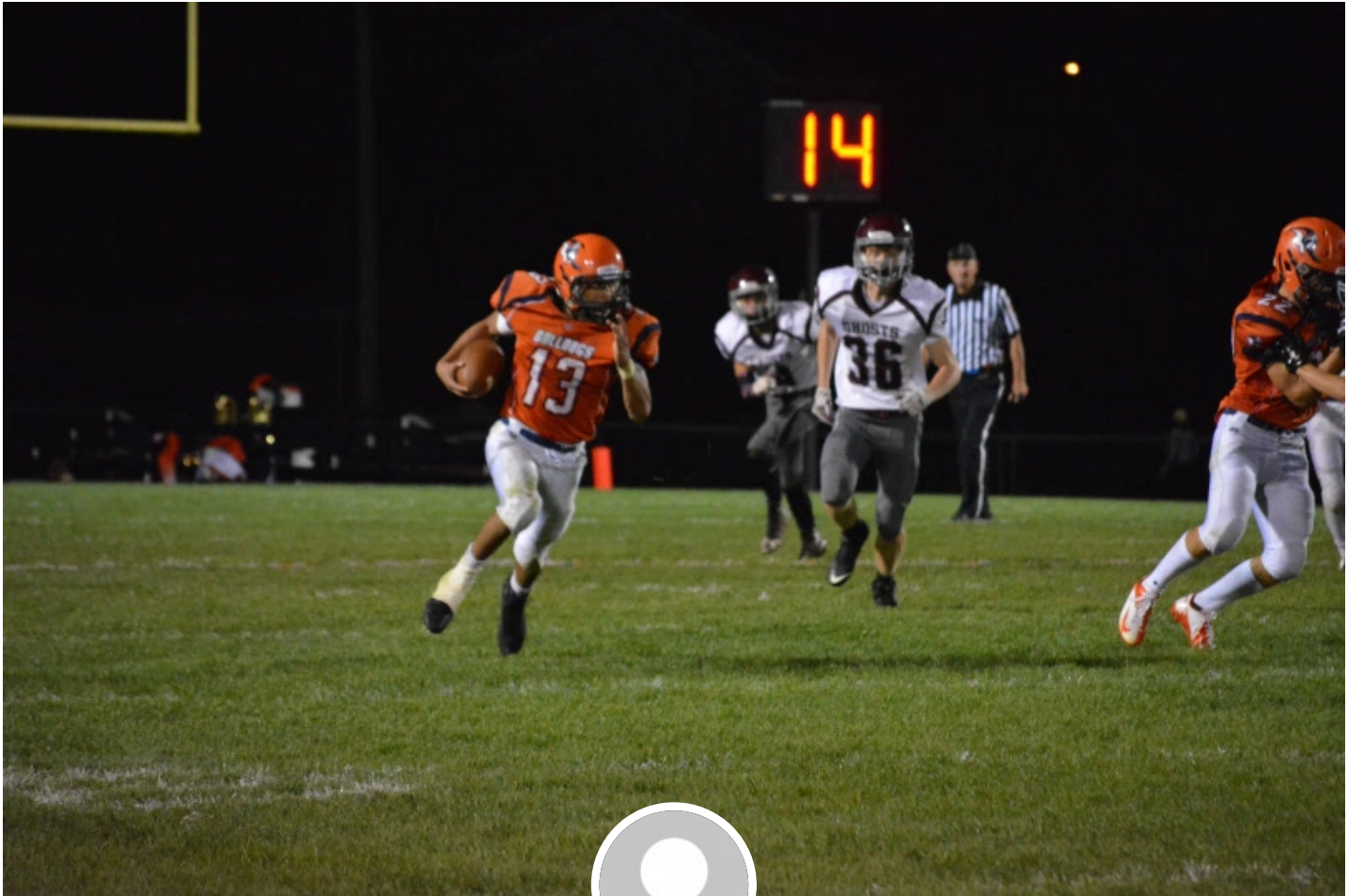
subscribe today!

HOME	NEWS	EVENTS	COMMUNITY	LIFE	KIDS	PHOTOS	SUBSCRIBE	
CONTACT	ADVERTISE							

News • sports

# Monday's Sports Round-Up

14 hours ago • by Dani Tietz • Add Comment • 41 Views



Written by Dani Tietz

### **MSHS Soccer**

The Bulldog defeated Roanoke Benson 3-0 Saturday. Sean Jackson struck twice in the first half off assists from Aaron Penick and Cameron Burgess. Evan Lunstrum also scored off an assist from Mason Bushell.

### **MSHS Girls' Golf**

The Lady Bulldogs won the Champaign County Tournament Friday with a true team effort. The girls played through some windy conditions on their way to a season best team score of 382.

The Lady Bulldogs all finished in the top ten at the tournament. Senior Cydney Mitchaner led the team with a 2nd place score of 90. Junior Syndey Shafer had a personal best 96. Jessi Haines (97) and Sydney Savage (99) contributed the other two team scores. Senior Keegan Gagne was just one stroke off with a score of 100.

### **MSHS Football**

Bryce Burks and Dominic Brackenhoff each contributed touchdowns in Friday's 17-6 win over Prairie Central. Burks rushed for 169 yards on 21 carries. Matthew Prather connected on a 33-yard field goal.

### **MSJHS Cross Country**

Race Results from Monticello.

The MSHJS Bulldogs finished strong at Monticello Saturday.

#### Girls' Varsity Team Results

1. Urbana (62)
2. Mahomet-Seymour (71)
3. Mt. Zion (83)

Girls' Varsity Individual Results- finishing in the top 25- 99 runners

1st- RACE CHAMP- Olivia Bunting (12:17)

#### Boys' Varsity Team Results

1. Mt. Zion (31)
2. Urbana (81)
3. Mahomet-Seymour (104)

Boys' Varsity Individual Results- finishing in the top 25- 100 runners

7th- William Larson (11:57)

Girls' Open Race Results- finishing in the top 25- 174 runners

1st- RACE CHAMPION- Elizabeth Sims (13:15)

2nd- Grace Lietz

Boys' Open Race Results- finishing in the top 25- 177 runners

3rd- Justin Straub

4th- Joseph Scheele

---

Share this:



---

**Related**

[Monday's Sports Round-Up](#)

September 14, 2015

In "Kids"

[MSHS Soccer team wins Bulldog Invitational, other weekend sports action](#)

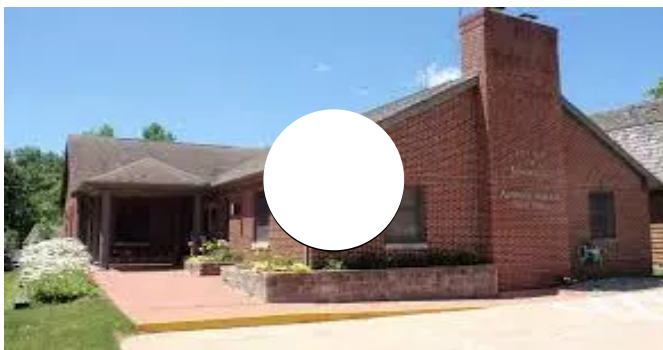
August 31, 2015

In "News"

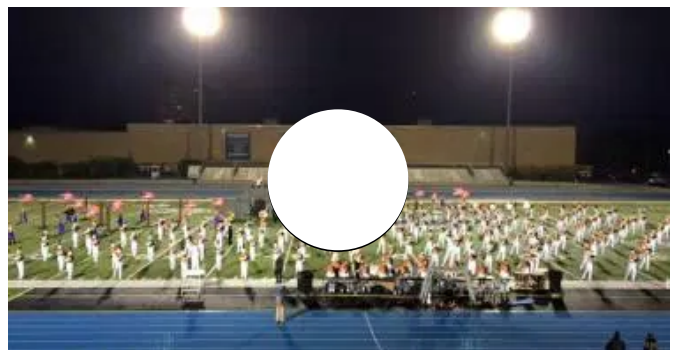
[Monday's Sports Round-Up](#)

September 28, 2015

In "News"



Planning and Zoning Agenda  
10.6.2015



MSHS Marching Band takes second  
at EIU Competition

---

You may also like



School Board Agenda 10.5.2015

15 hours ago • by Dani Tietz

• Add Comment



K-5 Report Cards contain more information useful to...

4 days ago • by Rebecca Hawley

• Add Comment



News • sports

Tuesday's Sports Round-Up

6 days ago • by Dani Tietz

• Add Comment



News • sports

Monday's Sports Round-Up

1 week ago • by Dani Tietz

• Add Comment



News • Village

Briarcliff Subdivision under boil order until further...

1 week ago • by Dani Tietz

• Add Comment



News • Village

Lunar Eclipse Sunday

2 weeks ago • by Dani Tietz

• Add Comment

## About the author



Dani Tietz

[View all posts](#)

## Leave a Comment

Name \*

Email \*

Website

Comment

Notify me of follow-up comments by email.

Notify me of new posts by email.



**FREE CAR CARE CLINIC  
HANDS-ON TRAINING  
OCTOBER 10  
9 A.M. TO 1 P.M.**

**LEARN HOW TO CHANGE OIL, CHANGE A SPARE TIRE  
FREE DASH LIGHT WARNING CHECKS**

**PURCHASE OIL AND FILTER FROM NAPA  
5 QUARTS OIL AND FILTER: \$21.99**

**CALL 217-586-2277  
TO SET UP AN APPOINTMENT**

**Teachers go above and beyond the call of duty**

COUNTRY Financial is giving back with an additional auto insurance discount of 10%. Contact me for a quote and start saving today.



**Jessie DeHaan**  
1200 W Bloomington Rd  
Champaign, IL 61821  
**217-352-3466**  
jessie.dehaan@countryfinancial.com



092054496434C

Picture loaned by COUNTRY Mutual Insurance Company\*, COUNTRY Preferred Insurance Company\*, or COUNTRY Casualty Insurance Company\*, Bloomington, IL

**Curves**

**HEALTH** starts with **STRENGTH**

**JOIN CURVES TODAY WITH A \$30\* donation to breast cancer research or care**

Research shows that exercise can help reduce your risk of some cancers, including breast cancer. Don't wait to find your strong at Curves, where our strength training circuit works every major muscle group, all within 30 minutes. Join now for just \$30\* and we'll donate every dollar to a cancer charity that's working hard to find a cure.

1504 Patton Drive, Ste. 3  
Mahomet, IL 61853  
**217.586.1440**

\*Monthly membership fees are \$37 required. Offer based on first visit enrollment for a 12 month recurring billing membership. Offer expires 10/31/15. Valid at participating locations only. 100% of \$30 enrollment fee will be donated to a cancer charity of the center's choice. Ask your center for more details. \*Monthly fees vary by location.

© 2015 Curves International, Inc. (1512)

**Teachers go above and beyond the call of duty**

COUNTRY Financial is giving back with an additional auto insurance discount of 10%. Contact me for a quote and start saving today.



**Jessie DeHaan**  
1200 W Bloomington Rd  
Champaign, IL 61821  
**217-352-3466**  
jessie.dehaan@  
countryfinancial.com



0920514-6264342

Member based on COUNTRY Mutual Insurance Company, COUNTRY Preferred Insurance Company, or COUNTRY Casualty Insurance Company, Bloomington, IL.

**Curves**  
**HEALTH** starts with  
**STRENGTH**

**JOIN CURVES TODAY WITH A \$30\* donation to breast cancer research or care**

Research shows that exercise can help reduce your risk of some cancers, including breast cancer. Don't wait to find your strong at Curves, where our strength training circuit works every major muscle group, all within 30 minutes. Join now for just \$30\* and we'll donate every dollar to a cancer charity that's working hard to find a cure.

1504 Patton Drive, Ste. 3  
Mahomet, IL 61853  
**217.586.1440**

\*Monthly membership fees are \$17 required. Offer based on 1st year enrollment for a 12 month recurring billing membership. Offer expires 10/31/16. Limit of participating locations only. 100% of \$30 enrollment fee will be donated to a cancer charity of the member's choice. Ask your center for more details. Monthly fees vary by location.  
© 2015 Curves International, Inc. (110)

**MAHOMET INSURANCE CENTRE, INC.** 405 S Division St  
Mahomet, IL 61853

**Agents**  
Lyn M Ferdinand, CIC  
Randy G Clark  
Evelyn R Brewer, CSA  
Sandy J Williams, CISR

**217-586-5656**  
[www.mahometinsurancecentre.com](http://www.mahometinsurancecentre.com)  
Home, Auto, Business, Life, Health and Group Benefits

**MAHOMET INSURANCE CENTRE, INC.** 405 S Division St  
Mahomet, IL 61853

**Agents**  
Lyn M Ferdinand, CIC  
Randy G Clark  
Evelyn R Brewer, CSA  
Sandy J Williams, CISR

**217-586-5656**  
[www.mahometinsurancecentre.com](http://www.mahometinsurancecentre.com)  
Home, Auto, Business, Life, Health and Group Benefits

**MAHOMET INSURANCE CENTRE, INC.** 405 S Division St  
Mahomet, IL 61853

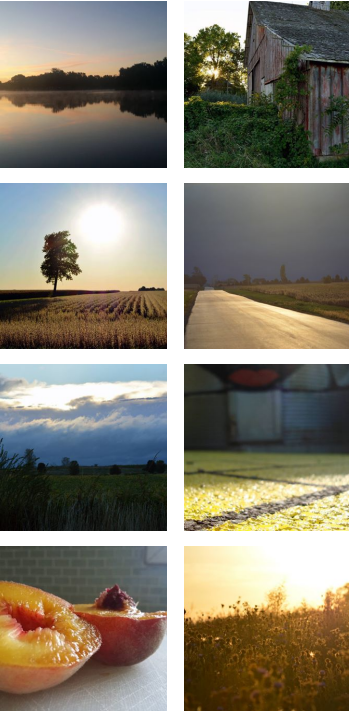
**Agents**  
Lyn M Ferdinand, CIC  
Randy G Clark  
Evelyn R Brewer, CSA  
Sandy J Williams, CISR

**217-586-5656**  
[www.mahometinsurancecentre.com](http://www.mahometinsurancecentre.com)  
Home, Auto, Business, Life, Health and Group Benefits

Our Community



@photographystudio58



Music Video of the Day



YouTube

Follow Us!

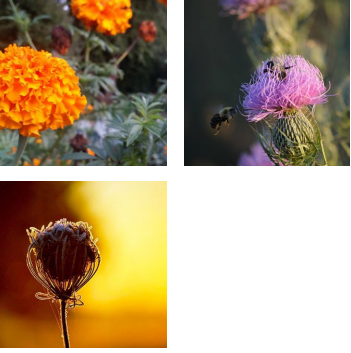
*Mahomet Daily* **Mahometdaily.com**  
3 hours ago

This dog is too cute!

*Mahomet Daily* **Mahometdaily.com**  
4 hours ago

Planning and Zoning Agenda  
10.6.2015  
[www.mahometdaily.com/new-md/planning-and-zoning-agenda-10-6-2015/](http://www.mahometdaily.com/new-md/planning-and-zoning-agenda-10-6-2015/)

*Mahomet Daily* **Mahometdaily.com**  
Like Page 2.2K likes



Follow on Instagram